

Valid: Sept. 1 - 11, 2021



731 Ashley St. Foxboro, (613) 967-1334



Save \$40
119⁹⁹

**8-Cu. Ft. Poly Tray
Wheelbarrow**

Poly tray with 16" pneumatic tires, wooden
wedges and cross braces. 60" wooden
handles.

6892905 Was \$159.99

Save \$10
19⁹⁹

Lawn Rake

Multi-purpose rake, 20"
polypro and steel head of 20
tines. 54" wood handle with
comfort grip.

9569518 Was \$29.99



Save \$30

139⁹⁹

**20V MAX POWERBOOST
Sweeper**

Up to 209 km/h. Includes (1) battery, (1)
charger and (1) blow tube.

6952469 Was \$169.99



Only!

159⁹⁹

WORX WG322 Auto-Tension Chainsaw, 20 V Battery,
10 in L Bar/Chain, 3/8 in Bar/Chain Pitch, Black

8381857



Save \$70

322⁹⁹

HEAVY DUTY FIRE PIT

Fire pit Constructed from long-lasting 1/4" mild rolled steel,
24" diameter. LIFE IS BETTER AT THE LAKE CUT OUT DESIGN

fp24lake Was \$392.99

WWW.TIMBERTOPSTORE.CA

More
Great Deals
Inside

Storage, Cleaning & Fall Prep Products

That's \$1 / Pair!

500

OX NITRILE GLOVES 5/PK
ox-s484610



Every Day!

999

400g One Shot® Jet Foam Wasp & Hornet Killer

Formulated to inject the nest with a thick foam, trapping hornets in their nest. Fast knock-down combined with residual action.

7667744



Save \$30

54⁹⁹

Folding Step Stool 3-Step

225 Lb. weight capacity. Non-slip steps..

1825843 Was \$84.99



Save \$50

279⁹⁹

7.5 Cu-ft Plastic Farm Utility Cart

All plastic, seamless design resists leaking and cracking. Ideal for heavy duty, long-lasting use. Rolls smoothly over any surface. Carries up to 300 lbs.

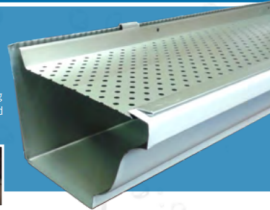
6415384 Was \$329.99



PROGUARD ALUMINUM RAINWARE SYSTEM

WHY PROGUARD II

Over time, many elements will try to infiltrate the gutter system. ProGuard II makes sure that won't happen. Made from high tensile strength aluminum, this unseen hero stays out of sight while giving you peace of mind. The gutter system will remain free of debris and stay focused on what matters, rainwater.



549

PROGUARD II

5" X 4' LENGTH • No more cleaning gutters. • Protects from debris, leaves, pine needles, twigs, shingle grit and more. • Protects against water damage to the basement. • Heavy gauge aluminum for uncompromising strength. • Perforated surface allows even the heaviest rainwater to flow freely into the gutters. • Channeled mounting system for unparalleled rigidity. • Will not obstruct the roof. • Easy to install.

226300

Everyday Value!

799

30-In. x 48-In. Maximum Lawn & Leaf Bags

Virgin hexene and reprocessed plastic bags with twist tie closure. 1 mil thickness. Clear color. 20 per box.

2575041



Save \$10

21⁹⁹

10 Gal. Refuse Container

Commercial grade. Innovative venting channels make lifting out liners easier. Reinforced base and rims. Rounded handles. Lid sold separately.

4236899 Was \$31.99



Save \$4

18⁹⁹

PestChaser® Speaker

Repels rodents from the sound protected area using intense high frequency sound waves. Safe around children and non-rodent pets.

9822057 Was \$22.99



39⁹⁹

23.2-Lb. Turf Builder® Pro Lawn Food

Promotes strong root development and provides early spring green-up. Also provides essential nutrients for vigorous growth of turf grasses in the fall.

7813405

Sign up to receive our FLYER by Email & never miss a single issue!

Tools & Supplies



Save \$10
44⁹⁹

4' Type II Aluminum Step Ladder

225-Lb. duty rating. Multifunctional ProTop with multiple tool slots. Automatic opening pail shelf. Slip-resistant rubber feet.

8874174 **Was \$54.99**



Save \$7
4⁹⁹

3-Pc. Paint Brush Set

Includes 1-1/2", 2" trim and 3" general purpose brushes.

5144696 **Was \$11.99**



Everyday!
49⁹⁹

Offset Left Replaceable Blade Snips

Offset blade pattern keeps blades free from material for a smooth forward cutting motion. Blades are easily replaced

mwt-2210



Quality!
37⁹⁹

Left Offset Aviation Snip

MWT-6510L MIDWEST® Offset Left Aviation Snips flow material away from blades and position user's hand above material for best maneuverability cutting full sheets or tight curves. This model is easiest used in right hand. Cuts straight and tight left curves. Bottom blade serrated.

mwt-6510l



Trusted!
37⁹⁹

Power Cutter Offset Long Cut Snips

Wide blade opening for secure grip of irregular surface materials such as ribbed metal roofing and siding, vinyl siding nail lip, etc.

mwt-6156



Save \$20
79⁹⁹

LED Work Light & USB Tripod

4000 lumens. Polycarbonate lens.

4482576 **Was \$99.99**

Contractor Priced!
3300⁰⁰

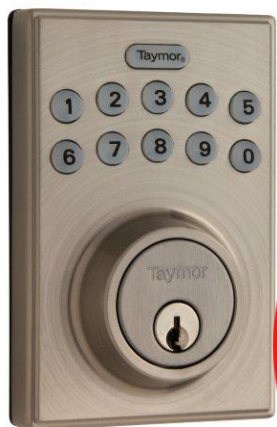
QMS 10'-6" Aluminum Brake

The QMS has a maximum capacity for bending/cutting 28 Gauge Soft Steel, 16 Oz Copper, .024 Aluminum Coil & .035 Vinyl Coil 19-1/2" Throat Depth. Equipped with* the Quick Cut System, Quick Measure System, Track mounted Cutter, Guide Bar, Cutter Stop, 2 Measuring Arms, 4 Maximizers, Full Table Top, & 3 Bending Handles

bkqms106



September Specials



Save \$40
139⁹⁹
Electronic Deadbolt
 Program up to 6 user codes 4-10
 digits in length Satin Nickel
 34-fv4067s Was \$179.99



Save \$7
11⁹⁹

36-In. Vinyl Door Sweep
 Insulating fins seal the gap under the door. Resists
 drafts, rain, dust, insect, light, noise, and moisture.
 Brown color.
 3524907 Was \$18.99

Save \$6
6⁹⁹

Climaloc Plus CF22002 Foam Tape,
 11/32 in W, 17 ft L, 7/32 in Thick,
 EPDM Rubber, White
 3032893 Was \$12.99



24⁹⁵

TAYMOR PROSET SERIES, Passage,
 Satin Nickel
 38-fv7505sn Was \$27.95



Save \$10
27⁵⁵

DUNDAS JAFINE ProClean PCPBZW Duct Brush,
 4 in Dia Brush, Nylon Handle
 0198648 Was \$37.55



Save \$1
16⁹⁹

9.46-L. Winter Proof Antifreeze
 Use for RV, vacation home, pool &
 hot tub, boat, and septic systems. It
 is non toxic, protects waterlines and
 is safe for metal and plastic pipes.
 7399124 Was \$17.99



Save \$10
42⁹⁹

Smoke/Carbon Monoxide Alarm
 Voice system states "FIRE!"
 when smoke/fire is detected and
 "CARBON MONOXIDE!"
 when CO levels become
 dangerous. Includes batteries.
 8847444 Was \$52.99



Save \$8
24⁹⁹

Kidde Home 468030MTL Fire Extinguisher,
 2.5 lb Capacity, 1-A-10-B-C, A, B, C Class
 8847642 Was \$32.99



Product selection, sale items, prices and quantities may vary by store. Right to limit quantities is reserved. Retailer is not responsible for pricing or typographical errors.

731 Ashley Street • Foxboro, Ontario
613-967-1334

TIMBER TOP



TIMBER MART®

www.timbertopstore.ca

Monday - Friday: 7:00am to 5:00pm
Saturday: 8:00am to Noon
Closed Sunday